

Signify Classified - Internal
Cooper Lighting Solutions Photometric Lab
1121 Highway 74 South
Peachtree City, GA 30269



Scaled data based on original data using
LM-79-2019 Approved Method: Electrical and Photometric Measurements of Solid-
State Lighting Products

Test Report Prepared for

Cooper Lighting Solutions

Brand: McGRAW-EDISON

Report Number: P641343

Luminaire Tested: GWS-SA5F-760-U-SLR-W-GRSBK

Issue Date: 1/10/2023

Test Information

Test Method: LM-79-2019
Report Number: P641343
TEST IS SCALED FROM IESNA LM-79-08 TEST DATA (G2-2209-782-42)
Test Lab: COOPER LIGHTING SOLUTIONS
Issue Date: 1/10/2023
Manufacturer: COOPER LIGHTING SOLUTIONS
Product Line: McGRAW-EDISON
Catalog Number: GWS-SA5F-760-U-SLR-W-GRSBK
Description: GALLEON WALL SLIM LUMINAIRE. (5) LIGHTSQUARES WITH 16 LEDS EACH AND SPILL LIGHT ELIMINATOR RIGHT OPTICS W/ FACTORY INSTALLED GLARE SHIELD, BK
Light Source: (80) 5700K CCT, 70 CRI LEDS
Ballast/Driver: -

Summary

Lumens per Lamp: N/A
Luminaire Lumens: 22465.3 lumens
Efficiency: N/A
Efficacy: 72.4 lumens/watt
Luminous Opening: Rectangular (W 1.5' x L: 1' x H: 0')
IES Classification: Type III - Short
BUG Rating: B3 - U0 - G2

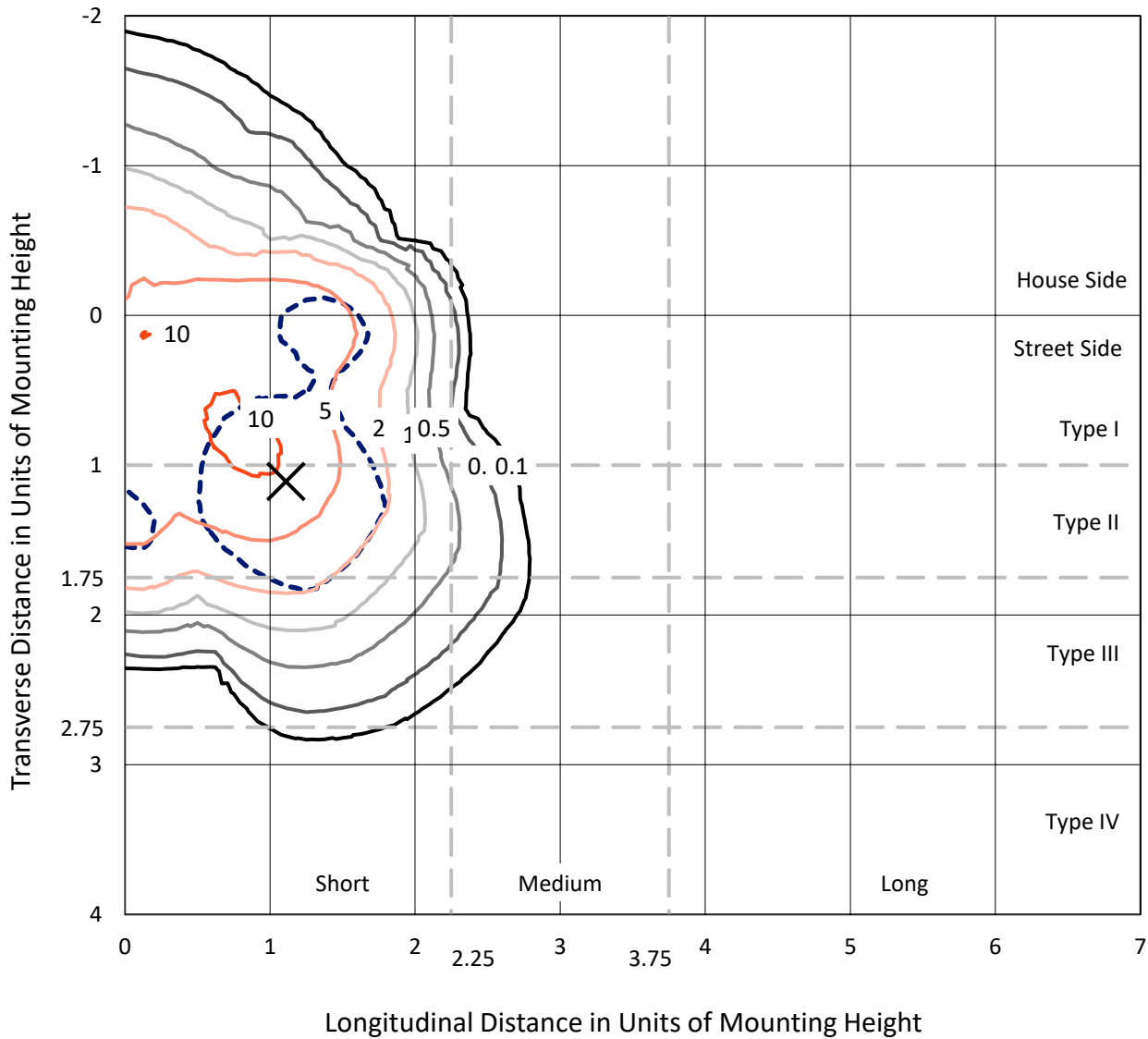
Input Watts (W): 310.3
Input Voltage (V): 120
Input Current (Ain): NR
Voltage Rise (V): NR
Power Factor: NR
Total Harmonic Distortion (THDi): NR
Frequency (hertz): 0
Stabilization Time: NR
Operation Time: NR
Ambient Temperature (°C): NR
Test Distance: 28.75 FT



REPORT NUMBER: P641343
 CATALOG NUMBER: GWS-SA5F-760-U-SLR-W-GRSBK

Iso-Footcandle Lines of Horizontal Illumination

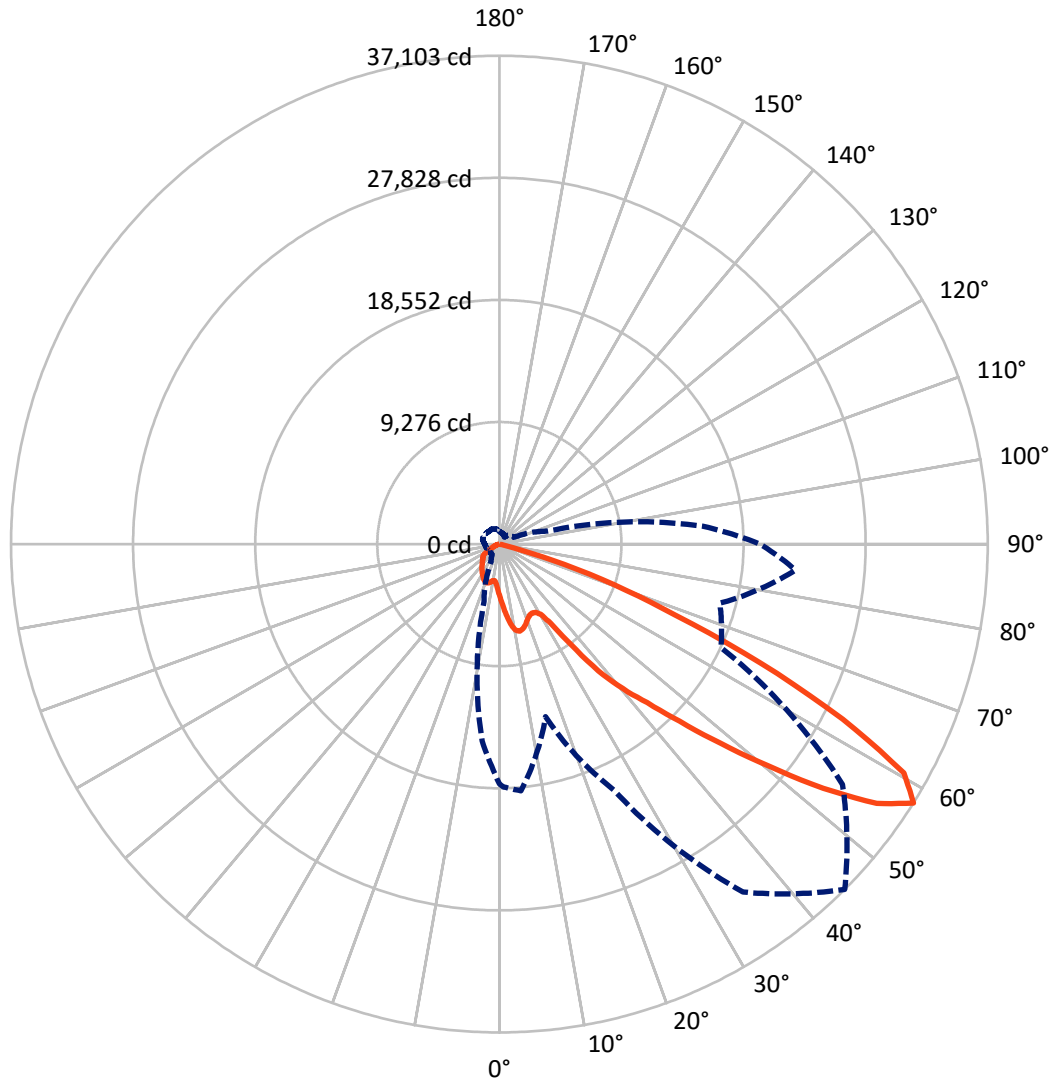
✕ Max cd
 - - - 1/2 Max cd



Based on 25 foot mounting height. Maximum calculated value = 11.3 fc
 Type III - Short - N/A

REPORT NUMBER: P641343
CATALOG NUMBER: GWS-SA5F-760-U-SLR-W-GRSBK

Luminous Intensity Polar Plot



— Vertical Plane Through 45-Deg Lateral - - - Horizontal Cone Through 57.5-Deg Vertical

REPORT NUMBER: P641343
 CATALOG NUMBER: GWS-SA5F-760-U-SLR-W-GRSBK

FLUX DISTRIBUTION:

| | | Downward | Upward | Total |
|--------------------|-----------|----------|--------|---------|
| House Side | Lumens | 5030.6 | 0.0 | 5030.6 |
| | % Fixture | 22.4 | 0.0 | 22.4 |
| Street Side | Lumens | 17434.7 | 0.0 | 17434.7 |
| | % Fixture | 77.6 | 0.0 | 77.6 |
| Total | Lumens | 22465.3 | 0.0 | 22465.3 |
| | % Fixture | 100.0 | 0.0 | 100.0 |

ZONAL LUMENS:

| Zone | Lumens | % Fixture |
|-----------|---------|-----------|
| 0°-10° | 388.4 | 1.7 |
| 10°-20° | 1256.6 | 5.6 |
| 20°-30° | 2041.3 | 9.1 |
| 30°-40° | 3154.0 | 14.0 |
| 40°-50° | 5057.5 | 22.5 |
| 50°-60° | 6912.3 | 30.8 |
| 60°-70° | 3347.8 | 14.9 |
| 70°-80° | 306.5 | 1.4 |
| 80°-90° | 0.9 | 0.0 |
| 90°-100° | 0.0 | 0.0 |
| 100°-110° | 0.0 | 0.0 |
| 110°-120° | 0.0 | 0.0 |
| 120°-130° | 0.0 | 0.0 |
| 130°-140° | 0.0 | 0.0 |
| 140°-150° | 0.0 | 0.0 |
| 150°-160° | 0.0 | 0.0 |
| 160°-170° | 0.0 | 0.0 |
| 170°-180° | 0.0 | 0.0 |
| 0°-90° | 22465.3 | 100.0 |
| 0°-180° | 22465.3 | 100.0 |

Coefficient of Utilization



REPORT NUMBER: P641343

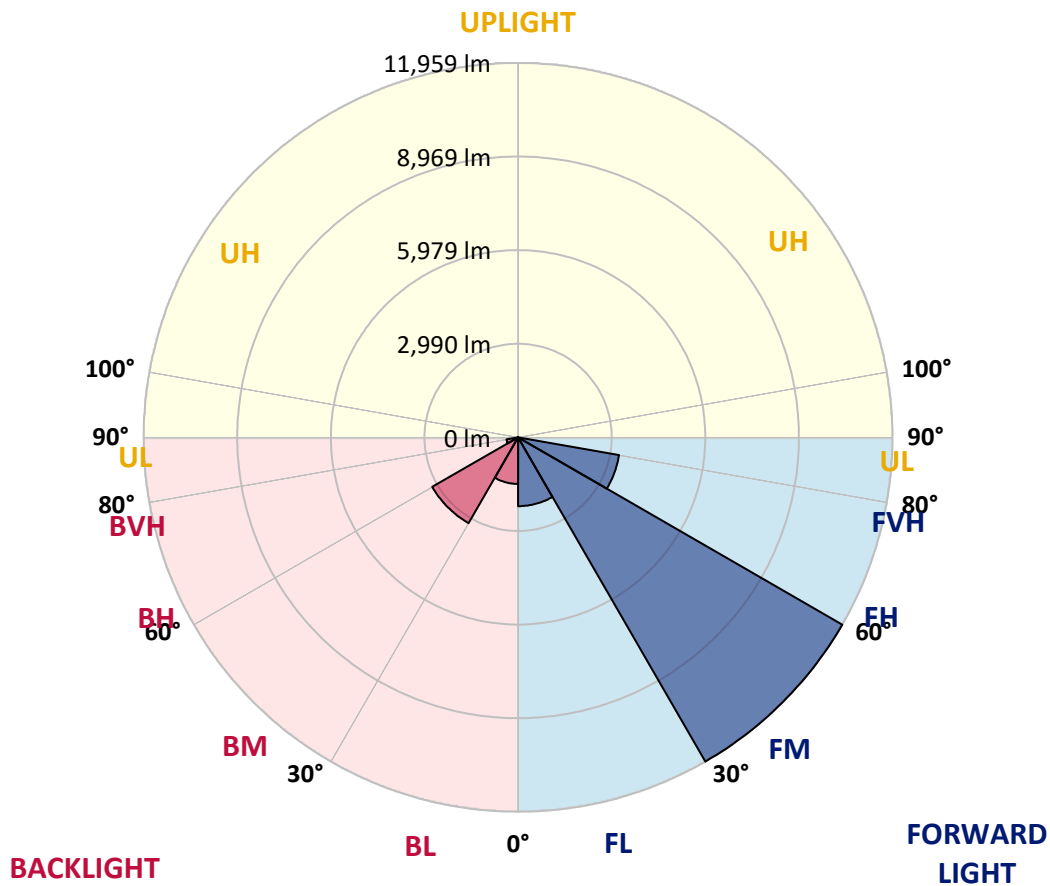
CATALOG NUMBER: GWS-SA5F-760-U-SLR-W-GRSBK

LUMINAIRE CLASSIFICATION SYSTEM LUMEN TABLE AND BUG RATING:

| Zone | Lumens | % Fixture | Zone Rating/Lumen Limit | | |
|----------------|---------|-----------|-------------------------|------|---------|
| | | | B | U | G |
| FL (0°-30°) | 2197.8 | 9.8 | | | |
| FM (30°-60°) | 11958.8 | 53.2 | | | |
| FH (60°-80°) | 3277.3 | 14.6 | | | G2/5000 |
| FVH (80°-90°) | 0.9 | 0.0 | | | G0/10 |
| BL (0°-30°) | 1488.5 | 6.6 | B3/2500 | | |
| BM (30°-60°) | 3165.0 | 14.1 | B3/5000 | | |
| BH (60°-80°) | 377.1 | 1.7 | B1/500 | | G1/500 |
| BVH (80°-90°) | 0.0 | 0.0 | | | G0/10 |
| UL (90°-100°) | 0.0 | 0.0 | | U0/0 | |
| UH (100°-180°) | 0.0 | 0.0 | | U0/0 | |

BUG Rating: B3-U0-G2

Type III Short





REPORT NUMBER: P641343
 CATALOG NUMBER: GWS-SA5F-760-U-SLR-W-GRSBK

CANDELA DISTRIBUTION (FULL):

| | 0° | 1° | 5° | 15° | 25° | 35° | 45° | 55° | 65° | 75° | 85° |
|-------|---------|---------|---------|---------|---------|---------|---------|---------|---------|---------|---------|
| 0° | 3948.5 | 3948.5 | 3948.5 | 3948.5 | 3948.5 | 3948.5 | 3948.5 | 3948.5 | 3948.5 | 3948.5 | 3948.5 |
| 2.5° | 4277.6 | 4304.7 | 4350.0 | 4446.6 | 4528.1 | 4582.5 | 4606.6 | 4600.6 | 4567.4 | 4543.2 | 4494.9 |
| 5° | 4736.4 | 4736.4 | 4824.0 | 5044.3 | 5213.4 | 5319.0 | 5373.4 | 5340.2 | 5273.7 | 5168.1 | 5005.1 |
| 7.5° | 5137.9 | 5153.0 | 5300.9 | 5614.9 | 5871.5 | 6022.4 | 6109.9 | 6091.8 | 5974.1 | 5771.8 | 5445.8 |
| 10° | 5451.9 | 5470.0 | 5666.2 | 6049.6 | 6351.4 | 6505.4 | 6635.2 | 6647.3 | 6517.5 | 6248.8 | 5874.5 |
| 12.5° | 5756.7 | 5774.9 | 5980.1 | 6348.4 | 6614.1 | 6677.5 | 6792.2 | 6837.5 | 6804.2 | 6614.1 | 6224.7 |
| 15° | 6085.8 | 6128.1 | 6303.1 | 6577.8 | 6689.5 | 6614.1 | 6689.5 | 6771.0 | 6882.7 | 6864.6 | 6514.5 |
| 17.5° | 6408.8 | 6439.0 | 6617.1 | 6713.7 | 6589.9 | 6393.7 | 6429.9 | 6526.5 | 6780.1 | 7027.6 | 6801.2 |
| 20° | 6707.6 | 6749.9 | 6897.8 | 6771.0 | 6396.7 | 6091.8 | 6094.8 | 6221.6 | 6608.0 | 7127.3 | 7094.0 |
| 22.5° | 7021.6 | 7085.0 | 7190.6 | 6834.4 | 6218.6 | 5853.3 | 5868.4 | 5983.2 | 6472.2 | 7220.8 | 7426.1 |
| 25° | 7432.1 | 7492.5 | 7562.0 | 6991.4 | 6161.3 | 5735.6 | 5793.0 | 5898.6 | 6472.2 | 7380.8 | 7836.7 |
| 27.5° | 7987.6 | 8029.9 | 8032.9 | 7284.2 | 6260.9 | 5753.7 | 5874.5 | 5995.2 | 6665.4 | 7700.8 | 8386.1 |
| 30° | 8684.9 | 8751.3 | 8663.8 | 7740.1 | 6571.8 | 5995.2 | 6173.3 | 6324.3 | 7082.0 | 8241.2 | 9195.1 |
| 32.5° | 9533.2 | 9626.8 | 9509.0 | 8416.3 | 7220.8 | 6828.4 | 7151.4 | 7238.9 | 7746.1 | 9023.0 | 10112.8 |
| 35° | 10529.4 | 10607.9 | 10481.1 | 9352.1 | 8736.2 | 8808.7 | 9394.3 | 9282.6 | 9080.4 | 9986.0 | 11184.4 |
| 37.5° | 11622.2 | 11694.6 | 11450.1 | 10770.9 | 10976.2 | 11290.1 | 12225.9 | 11842.5 | 11190.5 | 11226.7 | 12346.7 |
| 40° | 12624.4 | 12702.9 | 12319.5 | 12313.5 | 12736.1 | 13309.6 | 14438.7 | 13910.4 | 13022.9 | 12850.8 | 13436.4 |
| 42.5° | 13662.8 | 13717.2 | 13370.0 | 13134.6 | 14094.5 | 15274.8 | 16470.3 | 15757.8 | 14236.4 | 14049.2 | 14800.9 |
| 45° | 15145.0 | 15259.8 | 14640.9 | 13539.1 | 15317.1 | 17535.9 | 19202.2 | 17810.6 | 15063.5 | 14912.6 | 16889.9 |
| 47.5° | 17324.6 | 17409.1 | 16147.3 | 13792.6 | 16455.2 | 20352.4 | 22616.4 | 20473.1 | 15791.1 | 15446.9 | 19745.6 |
| 50° | 19126.8 | 19184.1 | 17532.9 | 14070.4 | 17665.7 | 23389.2 | 26507.6 | 23630.7 | 16609.1 | 16331.4 | 22411.2 |
| 52.5° | 20455.0 | 20672.4 | 19353.2 | 14640.9 | 19256.6 | 26960.4 | 30815.3 | 27371.0 | 17886.1 | 18040.0 | 24620.9 |
| 55° | 20729.7 | 21025.6 | 20596.9 | 14991.1 | 20657.3 | 30598.0 | 34794.0 | 30718.7 | 19160.0 | 19335.1 | 25363.5 |
| 57.5° | 18218.1 | 18453.6 | 18809.8 | 13578.3 | 20624.1 | 32264.3 | 37103.4 | 31829.6 | 18580.4 | 17339.7 | 22583.2 |
| 60° | 13647.7 | 13810.8 | 14456.8 | 10378.4 | 18966.8 | 30791.2 | 35304.2 | 29939.9 | 16246.9 | 13231.2 | 17206.8 |
| 62.5° | 8093.3 | 8165.7 | 8983.8 | 6722.7 | 15742.8 | 26516.7 | 29278.8 | 25834.4 | 12838.7 | 8899.3 | 10538.4 |
| 65° | 3106.3 | 3076.1 | 3701.0 | 3317.6 | 11576.9 | 21122.2 | 21777.2 | 19694.3 | 8808.7 | 4078.3 | 4017.9 |
| 67.5° | 480.0 | 458.8 | 618.8 | 981.1 | 8349.8 | 14637.9 | 14369.2 | 14194.1 | 5518.3 | 950.9 | 830.2 |
| 70° | 108.7 | 108.7 | 132.8 | 289.8 | 5101.7 | 8600.4 | 9204.2 | 8775.5 | 3531.9 | 202.3 | 108.7 |
| 72.5° | 51.3 | 51.3 | 63.4 | 123.8 | 1847.5 | 3544.0 | 4129.6 | 4066.2 | 1147.1 | 66.4 | 39.2 |
| 75° | 18.1 | 21.1 | 21.1 | 27.2 | 111.7 | 184.1 | 422.6 | 301.9 | 72.4 | 0.0 | 0.0 |
| 77.5° | 6.0 | 6.0 | 6.0 | 6.0 | 0.0 | 0.0 | 0.0 | 0.0 | 0.0 | 0.0 | 0.0 |
| 80° | 3.0 | 3.0 | 3.0 | 0.0 | 0.0 | 0.0 | 0.0 | 0.0 | 0.0 | 0.0 | 0.0 |
| 82.5° | 3.0 | 0.0 | 0.0 | 0.0 | 0.0 | 0.0 | 0.0 | 0.0 | 0.0 | 0.0 | 0.0 |
| 85° | 0.0 | 0.0 | 0.0 | 0.0 | 0.0 | 0.0 | 0.0 | 0.0 | 0.0 | 0.0 | 0.0 |
| 87.5° | 0.0 | 0.0 | 0.0 | 0.0 | 0.0 | 0.0 | 0.0 | 0.0 | 0.0 | 0.0 | 0.0 |
| 90° | 0.0 | 0.0 | 0.0 | 0.0 | 0.0 | 0.0 | 0.0 | 0.0 | 0.0 | 0.0 | 0.0 |



REPORT NUMBER: P641343

CATALOG NUMBER: GWS-SA5F-760-U-SLR-W-GRSBK

CANDELA DISTRIBUTION (continued):

| | 90° | 95° | 105° | 115° | 125° | 135° | 145° | 155° | 165° | 175° | 180° |
|-------|---------|---------|--------|--------|--------|--------|--------|--------|--------|--------|--------|
| 0° | 3948.5 | 3948.5 | 3948.5 | 3948.5 | 3948.5 | 3948.5 | 3948.5 | 3948.5 | 3948.5 | 3948.5 | 3948.5 |
| 2.5° | 4389.3 | 4368.1 | 4289.6 | 4184.0 | 4081.3 | 3990.8 | 3897.2 | 3785.5 | 3704.0 | 3610.4 | 3580.2 |
| 5° | 4878.3 | 4745.5 | 4531.1 | 4307.7 | 4102.5 | 3927.4 | 3758.3 | 3577.2 | 3444.4 | 3311.6 | 3266.3 |
| 7.5° | 5291.9 | 5095.6 | 4748.5 | 4413.4 | 4132.7 | 3885.1 | 3640.6 | 3393.1 | 3199.9 | 3042.9 | 2994.6 |
| 10° | 5663.2 | 5436.8 | 4971.9 | 4558.3 | 4205.1 | 3918.3 | 3622.5 | 3311.6 | 3061.0 | 2873.8 | 2828.6 |
| 12.5° | 5983.2 | 5720.5 | 5162.1 | 4667.0 | 4235.3 | 3906.3 | 3619.5 | 3371.9 | 3145.5 | 2931.2 | 2873.8 |
| 15° | 6251.8 | 5962.0 | 5322.0 | 4739.4 | 4190.0 | 3755.3 | 3504.8 | 3465.5 | 3447.4 | 3211.9 | 3100.3 |
| 17.5° | 6514.5 | 6188.4 | 5451.9 | 4772.6 | 4063.2 | 3489.7 | 3308.5 | 3486.6 | 3676.8 | 3522.9 | 3381.0 |
| 20° | 6789.2 | 6417.9 | 5584.7 | 4778.7 | 3851.9 | 3190.8 | 3160.6 | 3441.4 | 3682.9 | 3634.6 | 3501.7 |
| 22.5° | 7112.2 | 6704.6 | 5750.7 | 4775.7 | 3586.3 | 2937.2 | 3052.0 | 3353.8 | 3550.0 | 3547.0 | 3441.4 |
| 25° | 7580.1 | 7066.9 | 5974.1 | 4793.8 | 3296.5 | 2741.0 | 2931.2 | 3205.9 | 3365.9 | 3359.9 | 3272.3 |
| 27.5° | 8081.2 | 7498.6 | 6263.9 | 4839.0 | 3048.9 | 2626.3 | 2789.3 | 3003.7 | 3142.5 | 3136.5 | 3061.0 |
| 30° | 8784.5 | 7996.7 | 6541.6 | 4842.1 | 2870.8 | 2565.9 | 2632.3 | 2780.3 | 2913.1 | 2898.0 | 2840.6 |
| 32.5° | 9638.9 | 8558.1 | 6774.1 | 4670.0 | 2759.1 | 2508.6 | 2469.3 | 2544.8 | 2647.4 | 2626.3 | 2611.2 |
| 35° | 10671.3 | 9225.3 | 6973.3 | 4292.7 | 2587.1 | 2393.9 | 2288.2 | 2303.3 | 2375.8 | 2387.8 | 2381.8 |
| 37.5° | 11848.6 | 10019.2 | 7220.8 | 3794.6 | 2354.6 | 2227.8 | 2086.0 | 2073.9 | 2116.1 | 2155.4 | 2185.6 |
| 40° | 13010.8 | 10912.8 | 7555.9 | 3290.4 | 2143.3 | 2016.5 | 1880.7 | 1850.5 | 1868.6 | 1938.0 | 2001.4 |
| 42.5° | 14317.9 | 11948.2 | 7918.2 | 2858.8 | 1998.4 | 1784.1 | 1654.3 | 1596.9 | 1648.2 | 1759.9 | 1835.4 |
| 45° | 16201.6 | 13400.2 | 8271.4 | 2514.6 | 1938.0 | 1578.8 | 1403.7 | 1397.7 | 1455.0 | 1599.9 | 1684.5 |
| 47.5° | 18846.0 | 15277.9 | 8503.8 | 2245.9 | 1935.0 | 1418.8 | 1210.5 | 1246.7 | 1313.2 | 1455.0 | 1551.6 |
| 50° | 21424.0 | 17629.5 | 8247.2 | 2040.7 | 1871.6 | 1313.2 | 1065.6 | 1138.1 | 1204.5 | 1328.2 | 1427.9 |
| 52.5° | 22978.7 | 18894.3 | 7248.0 | 1847.5 | 1675.4 | 1264.9 | 923.7 | 1050.5 | 1062.6 | 1174.3 | 1279.9 |
| 55° | 22815.7 | 18076.2 | 5551.5 | 1548.6 | 1385.6 | 1195.4 | 775.8 | 947.9 | 953.9 | 1038.4 | 1129.0 |
| 57.5° | 19803.0 | 15519.4 | 3812.7 | 1255.8 | 1041.5 | 987.1 | 640.0 | 800.0 | 857.3 | 908.6 | 975.1 |
| 60° | 14758.6 | 11323.3 | 1699.6 | 1020.3 | 661.1 | 667.1 | 546.4 | 603.7 | 691.3 | 751.7 | 809.0 |
| 62.5° | 8697.0 | 6514.5 | 691.3 | 612.8 | 365.3 | 419.6 | 440.7 | 440.7 | 495.1 | 540.4 | 576.6 |
| 65° | 3287.4 | 2279.2 | 280.7 | 307.9 | 190.2 | 196.2 | 259.6 | 320.0 | 362.2 | 401.5 | 449.8 |
| 67.5° | 576.6 | 398.5 | 144.9 | 114.7 | 111.7 | 99.6 | 132.8 | 208.3 | 232.4 | 262.6 | 283.8 |
| 70° | 96.6 | 81.5 | 60.4 | 57.4 | 51.3 | 54.3 | 87.5 | 147.9 | 163.0 | 172.1 | 181.1 |
| 72.5° | 27.2 | 24.1 | 18.1 | 15.1 | 12.1 | 15.1 | 54.3 | 114.7 | 120.7 | 126.8 | 135.8 |
| 75° | 0.0 | 0.0 | 0.0 | 0.0 | 0.0 | 0.0 | 21.1 | 81.5 | 87.5 | 90.6 | 99.6 |
| 77.5° | 0.0 | 0.0 | 0.0 | 0.0 | 0.0 | 0.0 | 0.0 | 18.1 | 24.1 | 30.2 | 24.1 |
| 80° | 0.0 | 0.0 | 0.0 | 0.0 | 0.0 | 0.0 | 0.0 | 0.0 | 0.0 | 0.0 | 0.0 |
| 82.5° | 0.0 | 0.0 | 0.0 | 0.0 | 0.0 | 0.0 | 0.0 | 0.0 | 0.0 | 0.0 | 0.0 |
| 85° | 0.0 | 0.0 | 0.0 | 0.0 | 0.0 | 0.0 | 0.0 | 0.0 | 0.0 | 0.0 | 0.0 |
| 87.5° | 0.0 | 0.0 | 0.0 | 0.0 | 0.0 | 0.0 | 0.0 | 0.0 | 0.0 | 0.0 | 0.0 |
| 90° | 0.0 | 0.0 | 0.0 | 0.0 | 0.0 | 0.0 | 0.0 | 0.0 | 0.0 | 0.0 | 0.0 |



REPORT NUMBER: P641343

CATALOG NUMBER: GWS-SA5F-760-U-SLR-W-GRSBK

CANDELA DISTRIBUTION (continued):

| | 185° | 195° | 205° | 215° | 225° | 235° | 245° | 255° | 265° | 270° | 275° |
|-------|--------|--------|--------|--------|--------|--------|--------|--------|--------|--------|--------|
| 0° | 3948.5 | 3948.5 | 3948.5 | 3948.5 | 3948.5 | 3948.5 | 3948.5 | 3948.5 | 3948.5 | 3948.5 | 3948.5 |
| 2.5° | 3562.1 | 3501.7 | 3468.5 | 3450.4 | 3450.4 | 3426.3 | 3399.1 | 3390.0 | 3429.3 | 3429.3 | 3495.7 |
| 5° | 3208.9 | 3160.6 | 3106.3 | 3073.1 | 3021.8 | 3030.8 | 3000.6 | 2997.6 | 3036.9 | 3055.0 | 3124.4 |
| 7.5° | 2964.4 | 2904.0 | 2870.8 | 2849.7 | 2822.5 | 2810.5 | 2783.3 | 2774.2 | 2795.4 | 2825.5 | 2892.0 |
| 10° | 2801.4 | 2792.3 | 2789.3 | 2804.4 | 2804.4 | 2789.3 | 2765.2 | 2750.1 | 2756.1 | 2813.5 | 2888.9 |
| 12.5° | 2843.7 | 2861.8 | 2867.8 | 2892.0 | 2904.0 | 2892.0 | 2873.8 | 2879.9 | 2919.1 | 3024.8 | 3136.5 |
| 15° | 3027.8 | 3012.7 | 3006.7 | 3018.7 | 3027.8 | 3015.7 | 3009.7 | 3055.0 | 3190.8 | 3341.8 | 3468.5 |
| 17.5° | 3224.0 | 3127.4 | 3085.2 | 3085.2 | 3091.2 | 3085.2 | 3091.2 | 3178.7 | 3399.1 | 3550.0 | 3643.6 |
| 20° | 3323.6 | 3145.5 | 3079.1 | 3064.0 | 3076.1 | 3079.1 | 3100.3 | 3199.9 | 3441.4 | 3547.0 | 3568.2 |
| 22.5° | 3293.5 | 3070.1 | 2994.6 | 2982.5 | 2994.6 | 3006.7 | 3027.8 | 3112.3 | 3338.7 | 3393.1 | 3384.0 |
| 25° | 3142.5 | 2922.1 | 2861.8 | 2861.8 | 2888.9 | 2885.9 | 2895.0 | 2955.4 | 3142.5 | 3175.7 | 3160.6 |
| 27.5° | 2952.3 | 2744.0 | 2692.7 | 2722.9 | 2747.1 | 2741.0 | 2744.0 | 2795.4 | 2934.2 | 2943.3 | 2928.2 |
| 30° | 2759.1 | 2578.0 | 2529.7 | 2565.9 | 2599.1 | 2593.1 | 2596.1 | 2647.4 | 2735.0 | 2725.9 | 2704.8 |
| 32.5° | 2562.9 | 2430.1 | 2393.9 | 2415.0 | 2466.3 | 2460.3 | 2472.4 | 2526.7 | 2559.9 | 2520.7 | 2496.5 |
| 35° | 2381.8 | 2312.4 | 2285.2 | 2297.3 | 2336.5 | 2345.6 | 2366.7 | 2402.9 | 2402.9 | 2354.6 | 2312.4 |
| 37.5° | 2212.7 | 2203.7 | 2185.6 | 2170.5 | 2206.7 | 2233.9 | 2264.1 | 2306.3 | 2245.9 | 2176.5 | 2137.3 |
| 40° | 2055.8 | 2095.0 | 2070.9 | 2031.6 | 2052.7 | 2092.0 | 2152.4 | 2185.6 | 2113.1 | 2043.7 | 1977.3 |
| 42.5° | 1910.9 | 1977.3 | 1968.2 | 1919.9 | 1938.0 | 1974.3 | 2043.7 | 2070.9 | 1986.3 | 1907.8 | 1844.5 |
| 45° | 1772.0 | 1865.6 | 1871.6 | 1811.2 | 1829.4 | 1865.6 | 1947.1 | 1956.1 | 1847.5 | 1762.9 | 1717.7 |
| 47.5° | 1651.3 | 1753.9 | 1756.9 | 1711.6 | 1717.7 | 1769.0 | 1844.5 | 1847.5 | 1723.7 | 1645.2 | 1587.9 |
| 50° | 1536.5 | 1654.3 | 1663.3 | 1624.1 | 1630.1 | 1690.5 | 1753.9 | 1741.8 | 1609.0 | 1527.5 | 1476.2 |
| 52.5° | 1397.7 | 1557.7 | 1578.8 | 1560.7 | 1584.8 | 1633.1 | 1672.4 | 1630.1 | 1476.2 | 1394.7 | 1349.4 |
| 55° | 1246.7 | 1455.0 | 1500.3 | 1488.2 | 1515.4 | 1554.7 | 1563.7 | 1536.5 | 1343.3 | 1261.8 | 1219.6 |
| 57.5° | 1071.7 | 1198.4 | 1276.9 | 1252.8 | 1273.9 | 1313.2 | 1340.3 | 1319.2 | 1174.3 | 1110.9 | 1074.7 |
| 60° | 887.5 | 972.0 | 990.1 | 950.9 | 932.8 | 1002.2 | 1065.6 | 1038.4 | 914.7 | 875.4 | 833.2 |
| 62.5° | 649.0 | 745.6 | 757.7 | 706.4 | 685.3 | 760.7 | 815.1 | 787.9 | 652.0 | 609.8 | 576.6 |
| 65° | 519.2 | 609.8 | 633.9 | 585.6 | 573.6 | 630.9 | 664.1 | 597.7 | 501.1 | 455.8 | 419.6 |
| 67.5° | 341.1 | 413.6 | 477.0 | 473.9 | 449.8 | 467.9 | 443.8 | 389.4 | 320.0 | 295.8 | 271.7 |
| 70° | 211.3 | 253.6 | 292.8 | 307.9 | 304.9 | 298.9 | 265.6 | 226.4 | 205.3 | 196.2 | 184.1 |
| 72.5° | 163.0 | 205.3 | 235.5 | 244.5 | 247.5 | 238.5 | 211.3 | 175.1 | 154.0 | 141.9 | 132.8 |
| 75° | 120.7 | 154.0 | 178.1 | 190.2 | 196.2 | 190.2 | 163.0 | 138.9 | 117.7 | 108.7 | 99.6 |
| 77.5° | 42.3 | 51.3 | 63.4 | 69.4 | 66.4 | 63.4 | 57.4 | 57.4 | 45.3 | 42.3 | 36.2 |
| 80° | 0.0 | 0.0 | 0.0 | 0.0 | 0.0 | 0.0 | 0.0 | 0.0 | 0.0 | 0.0 | 0.0 |
| 82.5° | 0.0 | 0.0 | 0.0 | 0.0 | 0.0 | 0.0 | 0.0 | 0.0 | 0.0 | 0.0 | 0.0 |
| 85° | 0.0 | 0.0 | 0.0 | 0.0 | 0.0 | 0.0 | 0.0 | 0.0 | 0.0 | 0.0 | 0.0 |
| 87.5° | 0.0 | 0.0 | 0.0 | 0.0 | 0.0 | 0.0 | 0.0 | 0.0 | 0.0 | 0.0 | 0.0 |
| 90° | 0.0 | 0.0 | 0.0 | 0.0 | 0.0 | 0.0 | 0.0 | 0.0 | 0.0 | 0.0 | 0.0 |



REPORT NUMBER: P641343
 CATALOG NUMBER: GWS-SA5F-760-U-SLR-W-GRSBK

CANDELA DISTRIBUTION (continued):

| | 285° | 295° | 305° | 315° | 325° | 335° | 345° | 355° | 359° | 360° |
|-------|--------|--------|--------|--------|--------|--------|--------|---------|---------|---------|
| 0° | 3948.5 | 3948.5 | 3948.5 | 3948.5 | 3948.5 | 3948.5 | 3948.5 | 3948.5 | 3948.5 | 3948.5 |
| 2.5° | 3571.2 | 3625.5 | 3725.1 | 3815.7 | 3912.3 | 4011.9 | 4120.6 | 4232.3 | 4283.6 | 4277.6 |
| 5° | 3230.1 | 3347.8 | 3510.8 | 3688.9 | 3888.1 | 4102.5 | 4341.0 | 4585.5 | 4691.1 | 4736.4 |
| 7.5° | 3015.7 | 3181.8 | 3396.1 | 3622.5 | 3885.1 | 4190.0 | 4549.2 | 4932.6 | 5086.6 | 5137.9 |
| 10° | 3042.9 | 3236.1 | 3414.2 | 3634.6 | 3915.3 | 4310.8 | 4757.5 | 5213.4 | 5394.5 | 5451.9 |
| 12.5° | 3263.3 | 3305.5 | 3353.8 | 3534.9 | 3888.1 | 4401.3 | 4947.7 | 5491.1 | 5699.4 | 5756.7 |
| 15° | 3462.5 | 3266.3 | 3175.7 | 3341.8 | 3791.5 | 4464.7 | 5140.9 | 5790.0 | 6019.4 | 6085.8 |
| 17.5° | 3471.6 | 3175.7 | 2973.5 | 3103.3 | 3634.6 | 4491.9 | 5331.1 | 6094.8 | 6345.4 | 6408.8 |
| 20° | 3359.9 | 3076.1 | 2816.5 | 2819.5 | 3420.2 | 4485.9 | 5488.1 | 6369.6 | 6650.3 | 6707.6 |
| 22.5° | 3196.9 | 2958.4 | 2689.7 | 2596.1 | 3190.8 | 4473.8 | 5660.1 | 6662.4 | 6967.3 | 7021.6 |
| 25° | 3015.7 | 2807.4 | 2569.0 | 2427.1 | 2961.4 | 4485.9 | 5901.6 | 7045.7 | 7380.8 | 7432.1 |
| 27.5° | 2819.5 | 2641.4 | 2475.4 | 2360.7 | 2768.2 | 4531.1 | 6191.4 | 7534.8 | 7933.3 | 7987.6 |
| 30° | 2614.2 | 2481.4 | 2415.0 | 2345.6 | 2647.4 | 4543.2 | 6505.4 | 8105.3 | 8609.5 | 8684.9 |
| 32.5° | 2412.0 | 2339.5 | 2342.5 | 2354.6 | 2532.7 | 4458.7 | 6792.2 | 8739.3 | 9412.4 | 9533.2 |
| 35° | 2224.8 | 2203.7 | 2264.1 | 2324.4 | 2366.7 | 4241.3 | 7042.7 | 9487.9 | 10405.6 | 10529.4 |
| 37.5° | 2064.8 | 2082.9 | 2158.4 | 2218.8 | 2185.6 | 3933.4 | 7374.8 | 10423.7 | 11516.5 | 11622.2 |
| 40° | 1910.9 | 1956.1 | 2043.7 | 2070.9 | 2046.7 | 3574.2 | 7773.3 | 11326.3 | 12479.5 | 12624.4 |
| 42.5° | 1769.0 | 1802.2 | 1926.0 | 1932.0 | 2007.5 | 3208.9 | 8156.6 | 12298.4 | 13587.4 | 13662.8 |
| 45° | 1654.3 | 1648.2 | 1775.0 | 1814.3 | 2058.8 | 2804.4 | 8531.0 | 13593.4 | 15036.4 | 15145.0 |
| 47.5° | 1542.6 | 1536.5 | 1566.7 | 1744.8 | 2079.9 | 2430.1 | 8902.3 | 15489.2 | 17137.4 | 17324.6 |
| 50° | 1436.9 | 1446.0 | 1352.4 | 1711.6 | 1965.2 | 2143.3 | 9071.3 | 17243.1 | 19048.3 | 19126.8 |
| 52.5° | 1343.3 | 1310.1 | 1147.1 | 1603.0 | 1720.7 | 1871.6 | 8591.3 | 18040.0 | 20231.6 | 20455.0 |
| 55° | 1210.5 | 1026.4 | 944.9 | 1301.1 | 1358.4 | 1633.1 | 7036.7 | 17578.1 | 20334.3 | 20729.7 |
| 57.5° | 1035.4 | 806.0 | 803.0 | 960.0 | 960.0 | 1515.4 | 4507.0 | 15018.3 | 17523.8 | 18218.1 |
| 60° | 796.9 | 624.9 | 664.1 | 667.1 | 615.8 | 1104.9 | 2529.7 | 10879.6 | 12956.5 | 13647.7 |
| 62.5° | 567.5 | 477.0 | 501.1 | 398.5 | 353.2 | 552.4 | 1213.5 | 6263.9 | 7996.7 | 8093.3 |
| 65° | 380.4 | 323.0 | 262.6 | 220.4 | 217.3 | 235.5 | 501.1 | 2264.1 | 2753.1 | 3106.3 |
| 67.5° | 250.6 | 196.2 | 138.9 | 138.9 | 157.0 | 157.0 | 190.2 | 374.3 | 525.3 | 480.0 |
| 70° | 163.0 | 135.8 | 87.5 | 84.5 | 102.6 | 102.6 | 96.6 | 102.6 | 108.7 | 108.7 |
| 72.5° | 120.7 | 102.6 | 51.3 | 45.3 | 57.4 | 60.4 | 54.3 | 51.3 | 51.3 | 51.3 |
| 75° | 90.6 | 72.4 | 30.2 | 21.1 | 27.2 | 36.2 | 30.2 | 21.1 | 21.1 | 18.1 |
| 77.5° | 36.2 | 27.2 | 12.1 | 9.1 | 15.1 | 21.1 | 18.1 | 9.1 | 6.0 | 6.0 |
| 80° | 3.0 | 6.0 | 6.0 | 6.0 | 9.1 | 12.1 | 15.1 | 6.0 | 3.0 | 3.0 |
| 82.5° | 0.0 | 3.0 | 3.0 | 3.0 | 6.0 | 9.1 | 12.1 | 6.0 | 3.0 | 3.0 |
| 85° | 0.0 | 0.0 | 0.0 | 0.0 | 6.0 | 9.1 | 6.0 | 3.0 | 0.0 | 0.0 |
| 87.5° | 0.0 | 0.0 | 0.0 | 0.0 | 3.0 | 9.1 | 6.0 | 3.0 | 0.0 | 0.0 |
| 90° | 0.0 | 0.0 | 0.0 | 0.0 | 0.0 | 0.0 | 0.0 | 0.0 | 0.0 | 0.0 |

Signify Classified - Internal
Cooper Lighting Solutions Photometric Lab
1121 Highway 74 South
Peachtree City, GA 30269



LM-79-2008: Approved Method: Electrical and Photometric Measurements of Solid-
State Lighting Products

Report Prepared for

Cooper Lighting Solutions

McGRAW-EDISON

Report Number: SP1-1908-441-9-R4

Test Date: 10/23/2019

Luminaire Tested: SA1C-760-U-5WQ

Data in this report applies to families of products SA1C-760-U-5WQ .

Test Information

Test Method: LM-79-2008
 Report Number: SP1-1908-441-9-R4
 Test Lab: COOPER LIGHTING SOLUTIONS
 Photometer: SP1 - 76IN SPHERE
 Measurement Geometry: 4π
 Issue Date: 10/28/2024
 Manufacturer: COOPER LIGHTING SOLUTIONS
 Product Line: McGRAW-EDISON
 Catalog Number: **SA1C-760-U-5WQ**
 Description: McGRAW EDISON ROADWAY AND AREA LUMINAIRE

THIS IS A REVISION OF SP1-1908-441-4-R3. TO UPDATE THE CATALOG INFORMATION.TESTED IN SITU. ROADWAY AND AREA LUMINAIRE. (1) 70 CRI, 5000K, 1050MA LIGHTSQUARE WITH 16 LEDS AND TYPE V WIDE OPTICS.

Spectral Parameters

| | | | | | |
|---------------------------|--------|-----------|------|------|-------|
| CCT (K): | 5474 | CRI (Ra): | 71.7 | R9: | -27.1 |
| CIE u': | 0.2052 | R1: | 70.6 | R10: | 40.8 |
| CIE v': | 0.4804 | R2: | 74.6 | R11: | 74.6 |
| Duv: | 0.0025 | R3: | 78.3 | R12: | 50.4 |
| CIE x: | 0.3330 | R4: | 73.8 | R13: | 70.0 |
| CIE y: | 0.3466 | R5: | 72.4 | R14: | 87.8 |
| CIE z: | 0.3204 | R6: | 67.5 | | |
| Peak Wavelength (nm): | 442 | R7: | 77.5 | | |
| Dominant Wavelength (nm): | 554 | R8: | 58.9 | | |
| Purity: | 4.1 | | | | |
| Rf: | 72.1 | | | | |
| Rg: | 97.2 | | | | |



Test Conditions

Stabilization Time: 240M
 Operation Time: 12H
 Room Temperature (°C) / RH%: 24.6/31%
 Sphere Temperature (°C): 25.9

REPORT NUMBER: SP1-1908-441-9-R4

| Measurement and Test Equipment | | | |
|--------------------------------|-----------------------|------------------|----------------------|
| Instrument | Identification Number | Calibration Date | Calibration Due Date |
| Photometer | IN0058 | 6/28/2019 | 12/28/2019 |
| Power Meter | IN0071 | 12/5/2018 | 12/5/2019 |
| AC Power Source | IN0063 | 12/5/2018 | 12/5/2019 |
| DC Power Source | IN0208 | 12/5/2018 | 12/5/2019 |
| Sphere Thermometer | IN0085 | 12/5/2018 | 12/5/2019 |
| Room Thermometer | IN0046 | 12/5/2018 | 12/5/2019 |

REPORT NUMBER: SP1-1908-441-9-R4

CIE 1931 Chromaticity Diagram



CIE 1931 Chromaticity Diagram with 2017 ANSI 7-Step and 4-Step Quadrangles



Point lies inside the ANSI 5700K 4-step quadrangle

REPORT NUMBER: SP1-1908-441-9-R4

Photopic Flux vs. Wavelength



#####

| λ (nm) | Power (µW/nm) | Lumens (φ/nm) | λ (nm) | Power (µW/nm) | Lumens (φ/nm) | λ (nm) | Power (µW/nm) | Lumens (φ/nm) | λ (nm) | Power (µW/nm) | Lumens (φ/nm) | λ (nm) | Power (µW/nm) | Lumens (φ/nm) |
|--------|---------------|---------------|--------|---------------|---------------|--------|---------------|---------------|--------|---------------|---------------|--------|---------------|---------------|
| 360 | 3540 | NR | 490 | 33363 | NR | 620 | 80193 | NR | 750 | 4663 | NR | 880 | 4678 | NR |
| 365 | 2862 | NR | 495 | 44177 | NR | 625 | 73091 | NR | 755 | 4147 | NR | 885 | 4128 | NR |
| 370 | 2865 | NR | 500 | 57019 | NR | 630 | 66269 | NR | 760 | 4040 | NR | 890 | 4504 | NR |
| 375 | 3254 | NR | 505 | 70030 | NR | 635 | 60012 | NR | 765 | 3474 | NR | 895 | 4371 | NR |
| 380 | 3076 | NR | 510 | 81972 | NR | 640 | 53914 | NR | 770 | 3469 | NR | 900 | 4082 | NR |
| 385 | 2904 | NR | 515 | 92590 | NR | 645 | 48385 | NR | 775 | 3181 | NR | 905 | 2982 | NR |
| 390 | 2689 | NR | 520 | 100305 | NR | 650 | 43219 | NR | 780 | 2969 | NR | 910 | 4351 | NR |
| 395 | 2619 | NR | 525 | 107452 | NR | 655 | 38562 | NR | 785 | 3132 | NR | 915 | 3365 | NR |
| 400 | 2679 | NR | 530 | 111373 | NR | 660 | 34110 | NR | 790 | 2507 | NR | 920 | 3430 | NR |
| 405 | 3515 | NR | 535 | 114505 | NR | 665 | 30085 | NR | 795 | 2968 | NR | 925 | 4264 | NR |
| 410 | 6934 | NR | 540 | 116408 | NR | 670 | 26205 | NR | 800 | 2758 | NR | 930 | 4095 | NR |
| 415 | 14943 | NR | 545 | 118700 | NR | 675 | 22906 | NR | 805 | 2872 | NR | 935 | 5048 | NR |
| 420 | 31939 | NR | 550 | 119209 | NR | 680 | 20058 | NR | 810 | 3094 | NR | 940 | 4074 | NR |
| 425 | 64701 | NR | 555 | 120742 | NR | 685 | 17413 | NR | 815 | 3222 | NR | 945 | 4949 | NR |
| 430 | 110939 | NR | 560 | 121594 | NR | 690 | 15447 | NR | 820 | 3238 | NR | 950 | 4387 | NR |
| 435 | 164597 | NR | 565 | 121913 | NR | 695 | 13398 | NR | 825 | 3524 | NR | 955 | 4978 | NR |
| 440 | 207696 | NR | 570 | 122147 | NR | 700 | 11777 | NR | 830 | 2921 | NR | 960 | 4706 | NR |
| 445 | 201830 | NR | 575 | 121605 | NR | 705 | 10412 | NR | 835 | 3595 | NR | 965 | 5083 | NR |
| 450 | 145410 | NR | 580 | 120248 | NR | 710 | 9544 | NR | 840 | 3016 | NR | 970 | 4522 | NR |
| 455 | 89594 | NR | 585 | 117717 | NR | 715 | 8940 | NR | 845 | 4032 | NR | 975 | 4740 | NR |
| 460 | 58321 | NR | 590 | 114359 | NR | 720 | 7897 | NR | 850 | 3579 | NR | 980 | 6122 | NR |
| 465 | 39318 | NR | 595 | 109974 | NR | 725 | 7045 | NR | 855 | 4571 | NR | 985 | 6450 | NR |
| 470 | 27693 | NR | 600 | 105269 | NR | 730 | 6483 | NR | 860 | 4485 | NR | 990 | 4875 | NR |
| 475 | 23081 | NR | 605 | 99453 | NR | 735 | 5838 | NR | 865 | 3978 | NR | 995 | 4764 | NR |
| 480 | 23002 | NR | 610 | 92921 | NR | 740 | 5261 | NR | 870 | 4298 | NR | 1000 | 3640 | NR |
| 485 | 26201 | NR | 615 | 86989 | NR | 745 | 4760 | NR | 875 | 4356 | NR | | | |

REPORT NUMBER: SP1-1908-441-9-R4

Scotopic Flux vs. Wavelength



Scotopic Lumens: 13759.3 S/P: 1.85

| λ (nm) | Power (µW/nm) | Lumens (φ/nm) | λ (nm) | Power (µW/nm) | Lumens (φ/nm) | λ (nm) | Power (µW/nm) | Lumens (φ/nm) | λ (nm) | Power (µW/nm) | Lumens (φ/nm) | λ (nm) | Power (µW/nm) | Lumens (φ/nm) |
|--------|---------------|---------------|--------|---------------|---------------|--------|---------------|---------------|--------|---------------|---------------|--------|---------------|---------------|
| 360 | 3540 | NR | 490 | 33363 | NR | 620 | 80193 | NR | 750 | 4663 | NR | 880 | 4678 | NR |
| 365 | 2862 | NR | 495 | 44177 | NR | 625 | 73091 | NR | 755 | 4147 | NR | 885 | 4128 | NR |
| 370 | 2865 | NR | 500 | 57019 | NR | 630 | 66269 | NR | 760 | 4040 | NR | 890 | 4504 | NR |
| 375 | 3254 | NR | 505 | 70030 | NR | 635 | 60012 | NR | 765 | 3474 | NR | 895 | 4371 | NR |
| 380 | 3076 | NR | 510 | 81972 | NR | 640 | 53914 | NR | 770 | 3469 | NR | 900 | 4082 | NR |
| 385 | 2904 | NR | 515 | 92590 | NR | 645 | 48385 | NR | 775 | 3181 | NR | 905 | 2982 | NR |
| 390 | 2689 | NR | 520 | 100305 | NR | 650 | 43219 | NR | 780 | 2969 | NR | 910 | 4351 | NR |
| 395 | 2619 | NR | 525 | 107452 | NR | 655 | 38562 | NR | 785 | 3132 | NR | 915 | 3365 | NR |
| 400 | 2679 | NR | 530 | 111373 | NR | 660 | 34110 | NR | 790 | 2507 | NR | 920 | 3430 | NR |
| 405 | 3515 | NR | 535 | 114505 | NR | 665 | 30085 | NR | 795 | 2968 | NR | 925 | 4264 | NR |
| 410 | 6934 | NR | 540 | 116408 | NR | 670 | 26205 | NR | 800 | 2758 | NR | 930 | 4095 | NR |
| 415 | 14943 | NR | 545 | 118700 | NR | 675 | 22906 | NR | 805 | 2872 | NR | 935 | 5048 | NR |
| 420 | 31939 | NR | 550 | 119209 | NR | 680 | 20058 | NR | 810 | 3094 | NR | 940 | 4074 | NR |
| 425 | 64701 | NR | 555 | 120742 | NR | 685 | 17413 | NR | 815 | 3222 | NR | 945 | 4949 | NR |
| 430 | 110939 | NR | 560 | 121594 | NR | 690 | 15447 | NR | 820 | 3238 | NR | 950 | 4387 | NR |
| 435 | 164597 | NR | 565 | 121913 | NR | 695 | 13398 | NR | 825 | 3524 | NR | 955 | 4978 | NR |
| 440 | 207696 | NR | 570 | 122147 | NR | 700 | 11777 | NR | 830 | 2921 | NR | 960 | 4706 | NR |
| 445 | 201830 | NR | 575 | 121605 | NR | 705 | 10412 | NR | 835 | 3595 | NR | 965 | 5083 | NR |
| 450 | 145410 | NR | 580 | 120248 | NR | 710 | 9544 | NR | 840 | 3016 | NR | 970 | 4522 | NR |
| 455 | 89594 | NR | 585 | 117717 | NR | 715 | 8940 | NR | 845 | 4032 | NR | 975 | 4740 | NR |
| 460 | 58321 | NR | 590 | 114359 | NR | 720 | 7897 | NR | 850 | 3579 | NR | 980 | 6122 | NR |
| 465 | 39318 | NR | 595 | 109974 | NR | 725 | 7045 | NR | 855 | 4571 | NR | 985 | 6450 | NR |
| 470 | 27693 | NR | 600 | 105269 | NR | 730 | 6483 | NR | 860 | 4485 | NR | 990 | 4875 | NR |
| 475 | 23081 | NR | 605 | 99453 | NR | 735 | 5838 | NR | 865 | 3978 | NR | 995 | 4764 | NR |
| 480 | 23002 | NR | 610 | 92921 | NR | 740 | 5261 | NR | 870 | 4298 | NR | 1000 | 3640 | NR |
| 485 | 26201 | NR | 615 | 86989 | NR | 745 | 4760 | NR | 875 | 4356 | NR | | | |

REPORT NUMBER: SP1-1908-441-9-R4

Melanopic Flux vs. Wavelength



Melanopic Lumens: 5527.6 M/P: 0.74

| λ (nm) | Power (µW/nm) | Lumens (φ/nm) | λ (nm) | Power (µW/nm) | Lumens (φ/nm) | λ (nm) | Power (µW/nm) | Lumens (φ/nm) | λ (nm) | Power (µW/nm) | Lumens (φ/nm) | λ (nm) | Power (µW/nm) | Lumens (φ/nm) |
|--------|---------------|---------------|--------|---------------|---------------|--------|---------------|---------------|--------|---------------|---------------|--------|---------------|---------------|
| 360 | 3540 | NR | 490 | 33363 | NR | 620 | 80193 | NR | 750 | 4663 | NR | 880 | 4678 | NR |
| 365 | 2862 | NR | 495 | 44177 | NR | 625 | 73091 | NR | 755 | 4147 | NR | 885 | 4128 | NR |
| 370 | 2865 | NR | 500 | 57019 | NR | 630 | 66269 | NR | 760 | 4040 | NR | 890 | 4504 | NR |
| 375 | 3254 | NR | 505 | 70030 | NR | 635 | 60012 | NR | 765 | 3474 | NR | 895 | 4371 | NR |
| 380 | 3076 | NR | 510 | 81972 | NR | 640 | 53914 | NR | 770 | 3469 | NR | 900 | 4082 | NR |
| 385 | 2904 | NR | 515 | 92590 | NR | 645 | 48385 | NR | 775 | 3181 | NR | 905 | 2982 | NR |
| 390 | 2689 | NR | 520 | 100305 | NR | 650 | 43219 | NR | 780 | 2969 | NR | 910 | 4351 | NR |
| 395 | 2619 | NR | 525 | 107452 | NR | 655 | 38562 | NR | 785 | 3132 | NR | 915 | 3365 | NR |
| 400 | 2679 | NR | 530 | 111373 | NR | 660 | 34110 | NR | 790 | 2507 | NR | 920 | 3430 | NR |
| 405 | 3515 | NR | 535 | 114505 | NR | 665 | 30085 | NR | 795 | 2968 | NR | 925 | 4264 | NR |
| 410 | 6934 | NR | 540 | 116408 | NR | 670 | 26205 | NR | 800 | 2758 | NR | 930 | 4095 | NR |
| 415 | 14943 | NR | 545 | 118700 | NR | 675 | 22906 | NR | 805 | 2872 | NR | 935 | 5048 | NR |
| 420 | 31939 | NR | 550 | 119209 | NR | 680 | 20058 | NR | 810 | 3094 | NR | 940 | 4074 | NR |
| 425 | 64701 | NR | 555 | 120742 | NR | 685 | 17413 | NR | 815 | 3222 | NR | 945 | 4949 | NR |
| 430 | 110939 | NR | 560 | 121594 | NR | 690 | 15447 | NR | 820 | 3238 | NR | 950 | 4387 | NR |
| 435 | 164597 | NR | 565 | 121913 | NR | 695 | 13398 | NR | 825 | 3524 | NR | 955 | 4978 | NR |
| 440 | 207696 | NR | 570 | 122147 | NR | 700 | 11777 | NR | 830 | 2921 | NR | 960 | 4706 | NR |
| 445 | 201830 | NR | 575 | 121605 | NR | 705 | 10412 | NR | 835 | 3595 | NR | 965 | 5083 | NR |
| 450 | 145410 | NR | 580 | 120248 | NR | 710 | 9544 | NR | 840 | 3016 | NR | 970 | 4522 | NR |
| 455 | 89594 | NR | 585 | 117717 | NR | 715 | 8940 | NR | 845 | 4032 | NR | 975 | 4740 | NR |
| 460 | 58321 | NR | 590 | 114359 | NR | 720 | 7897 | NR | 850 | 3579 | NR | 980 | 6122 | NR |
| 465 | 39318 | NR | 595 | 109974 | NR | 725 | 7045 | NR | 855 | 4571 | NR | 985 | 6450 | NR |
| 470 | 27693 | NR | 600 | 105269 | NR | 730 | 6483 | NR | 860 | 4485 | NR | 990 | 4875 | NR |
| 475 | 23081 | NR | 605 | 99453 | NR | 735 | 5838 | NR | 865 | 3978 | NR | 995 | 4764 | NR |
| 480 | 23002 | NR | 610 | 92921 | NR | 740 | 5261 | NR | 870 | 4298 | NR | 1000 | 3640 | NR |
| 485 | 26201 | NR | 615 | 86989 | NR | 745 | 4760 | NR | 875 | 4356 | NR | | | |

REPORT NUMBER: SP1-1908-441-9-R4

TM-30-18

Summary

$R_f = 72.1$
 $R_g = 97.2$
 CIE $R_a = 71.7$
 $R_g = -27.1$



Color Vector Graphics



REPORT NUMBER: SP1-1908-441-9-R4

TM-30-18

Individual Sample Fidelity Index ($R_{f,i}$)

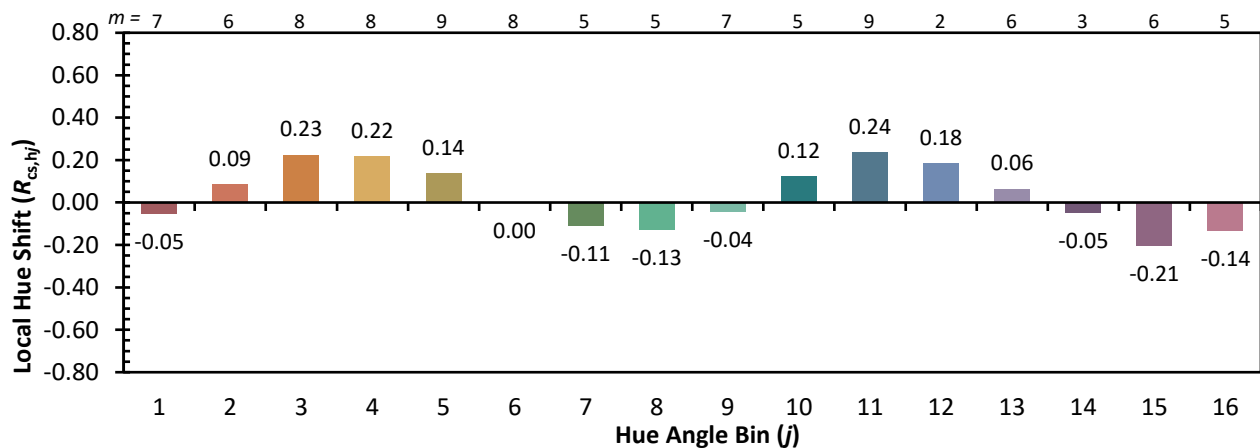
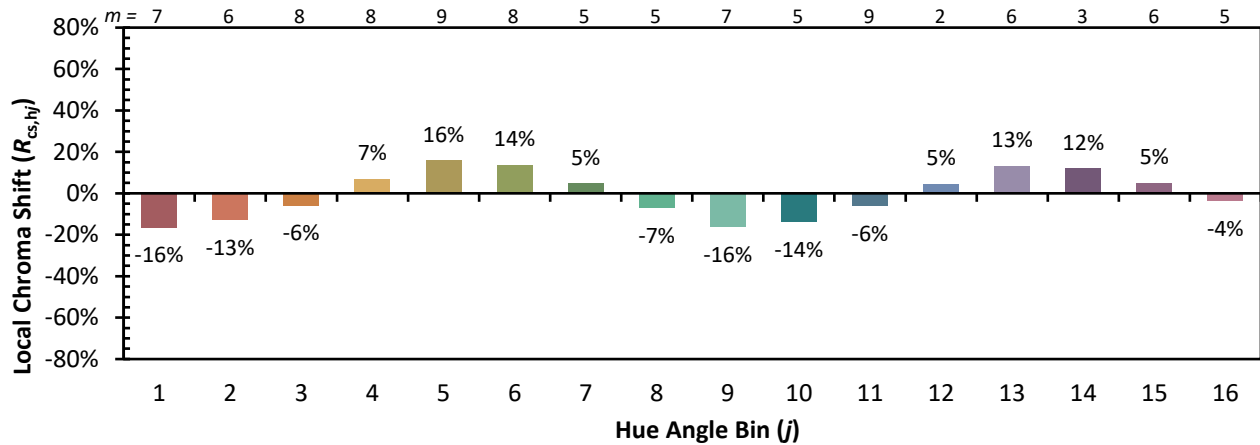
| | | | |
|------------|------------|------------|------------|
| CES01 = 85 | CES26 = 54 | CES51 = 88 | CES76 = 43 |
| CES02 = 59 | CES27 = 79 | CES52 = 90 | CES77 = 64 |
| CES03 = 30 | CES28 = 77 | CES53 = 77 | CES78 = 46 |
| CES04 = 69 | CES29 = 50 | CES54 = 81 | CES79 = 74 |
| CES05 = 46 | CES30 = 59 | CES55 = 80 | CES80 = 70 |
| CES06 = 50 | CES31 = 55 | CES56 = 70 | CES81 = 71 |
| CES07 = 38 | CES32 = 52 | CES57 = 68 | CES82 = 88 |
| CES08 = 38 | CES33 = 63 | CES58 = 70 | CES83 = 82 |
| CES09 = 29 | CES34 = 63 | CES59 = 88 | CES84 = 87 |
| CES10 = 72 | CES35 = 79 | CES60 = 92 | CES85 = 84 |
| CES11 = 55 | CES36 = 90 | CES61 = 88 | CES86 = 76 |
| CES12 = 61 | CES37 = 72 | CES62 = 81 | CES87 = 75 |
| CES13 = 41 | CES38 = 68 | CES63 = 75 | CES88 = 77 |
| CES14 = 74 | CES39 = 91 | CES64 = 72 | CES89 = 76 |
| CES15 = 70 | CES40 = 83 | CES65 = 65 | CES90 = 76 |
| CES16 = 46 | CES41 = 84 | CES66 = 66 | CES91 = 92 |
| CES17 = 48 | CES42 = 70 | CES67 = 64 | CES92 = 70 |
| CES18 = 55 | CES43 = 69 | CES68 = 71 | CES93 = 83 |
| CES19 = 70 | CES44 = 98 | CES69 = 80 | CES94 = 60 |
| CES20 = 64 | CES45 = 79 | CES70 = 58 | CES95 = 73 |
| CES21 = 85 | CES46 = 78 | CES71 = 55 | CES96 = 79 |
| CES22 = 77 | CES47 = 76 | CES72 = 84 | CES97 = 84 |
| CES23 = 91 | CES48 = 68 | CES73 = 47 | CES98 = 73 |
| CES24 = 90 | CES49 = 78 | CES74 = 94 | CES99 = 62 |
| CES25 = 71 | CES50 = 87 | CES75 = 51 | |



REPORT NUMBER: SP1-1908-441-9-R4

TM-30-18

Color Rendition by Hue-Angle Bin



REPORT NUMBER: SP1-1908-441-9-R4

TM-30-18

Measure Comparisons



(END OF REPORT)